

# JASMINER X4

## High-throughput Server Instruction

## Manual

Tip: Follow the official account of SUNLUNE , then reply “course” to get the use demonstration video of the device.



SUNLUNE Technology (Nantong) Co., Ltd.

September 2022

## Catalogue

I Product Introduction .....	3
II Inspection before use .....	4
III Basic description .....	5
IV Use and settings.....	8

## JASMINER X4 High-throughput Server Instruction Manual

### I Product Introduction

JASMINER X4 high-throughput server, is a super cost-effective computing server developed by SUNLUNE technology (Nantong) Co., Ltd. JASMINER X4 based on memory computing integrated high-throughput ASIC. The ASIC with memory computing integrated structure realizes the combination of Memory and computing, increases the access bandwidth while meeting the demand of storage capacity, breaks through the bottleneck of computing power, save energy and size , providing sufficient computing power, exquisite low noise design , solid and quite. with the integrated memory and computing architecture and high-throughput technology, JASMINER X4 suitable for PoW algorithms such as ETCHASH, satisfy various customers and bring them a good return on investment.

Excellent performance and easy to use, Exquisite design, user friendly interface and simple operation. Just need set a few parameters.Simple interface,power supply and network access is required. Excellent computing performance, efficient and concise IO expansion capability and high stability.

### **Energy saving, environment friendly and widely used**

Very low power consumption, low-noise design, high efficiency,

environment friendly. Environmental temperature  $\leq 40$  °C. Designed for multi-level users, it can be used in both domestic environments and professional premises (IDC rooms) and can be operated without specialist knowledge.



JASMINER X4 High-throughput server

## II Inspection before use

### 1. Inspection before use

- After unpacking, please check for any package deformation or interface damage. If there is any fault, please contact the after-sales department.
- Check for abnormal sound, metal collision or screw loosen. If there is any fault, please contact the after-sales department.

### 2. Attention

- The device should be connected to router or Exchanger without PoE function, only wired network connection can be used.
- To avoid heat dissipation, do not stack or cover the device with other objects.

- Please run the device under the recommended operating environment (operating temperature: 0-40°C, operating humidity: 5 RH~95 RH, non condensation) to avoid affecting the normal operation or performance of the device.
- Pay attention to dust and foreign matters, otherwise, the mainboard may be corroded and the device cannot work properly.
- Private renovation is not guaranteed.

### III Basic description

#### 1. Device



JASMINER X4 High-throughput server

#### Attention:

Place the device as shown in the figure above. Do not place the device in a closed space.

For your safety, do not remove any screws or fasteners from the device.

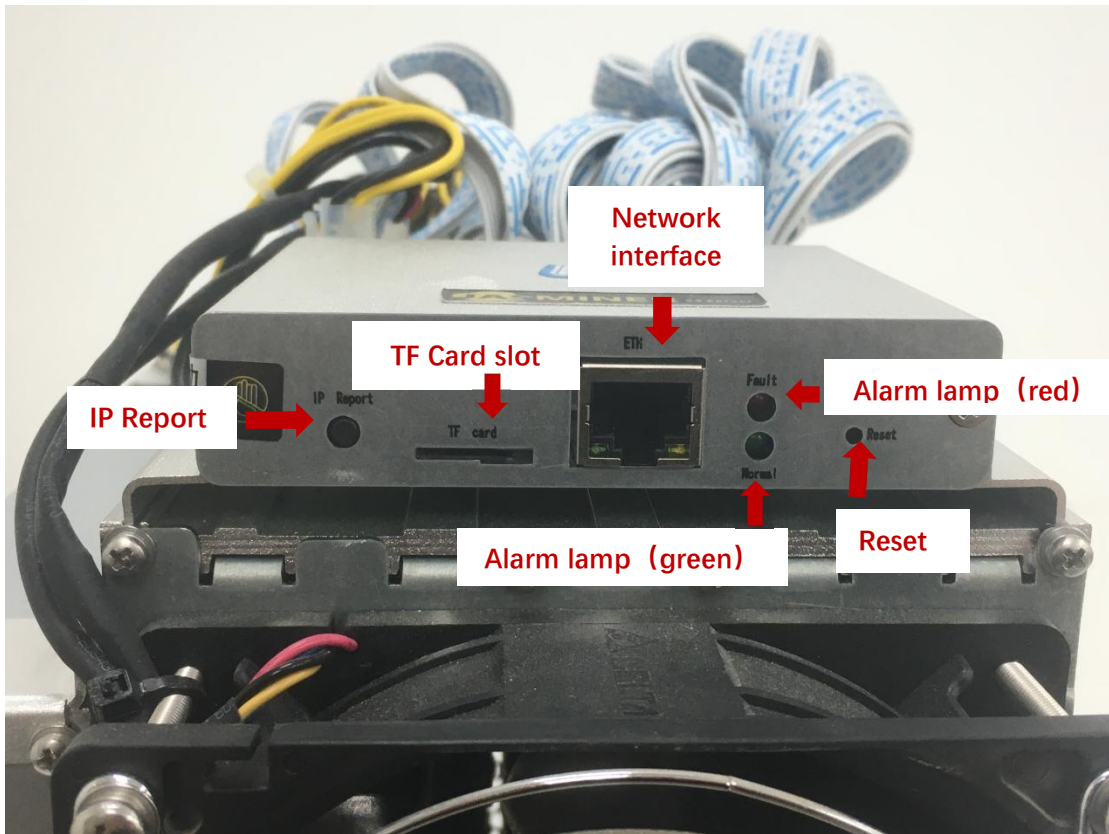
The device will generate heat during operation. Please avoid touching the shell during operation.

## 2. parameter

Overview	Specification
Type	JASMINER X4
Name	High-throughput 1U server
Encryption algorithm	ETCHASH
Hashrate (MH/s)	2500MH/s $\pm 10\%$
INPUT	200-240V~,50/60Hz,1.2A
power consumption (Watt)	1200W $\pm 10\%$

Energy efficiency ratio (25 ° C ambient temperature, J / MH)	0.48 $\pm 10\%$
<b>Hardware Configuration</b>	
Network connection	RJ45 Ethernet 10/100/1000M
Device size (mm)	339.7×180×292
Package size (mm)	407× 292×390
Device weight (kg)	12.35
Overall weight (including package, kg)	13.75

### 3. Interface and description



TF card	TF Card slot
IP Report	When using IP report software, the high-throughput 1U server IP address will be feedback to your PC
ETH	network interface
Reset	Restore factory setting
alarm lamp (red)	Continuous light indicates device failure
Operation lamp (green)	Flashing light indicates device running well

## IV Use and settings

### 1. Connection inspection

a) Network cable connection: Insert the RJ45 crystal head into the network interface marked with ETH of the router and the device interface respectively. Pay attention to the direction when inserting the cable.

Please insert the crystal head in place.

b) Power cable connection: Connect the Power output end of the adapter to the Power port labeled Power of the device, and then connect the 220V AC Power to the device for normal operation.

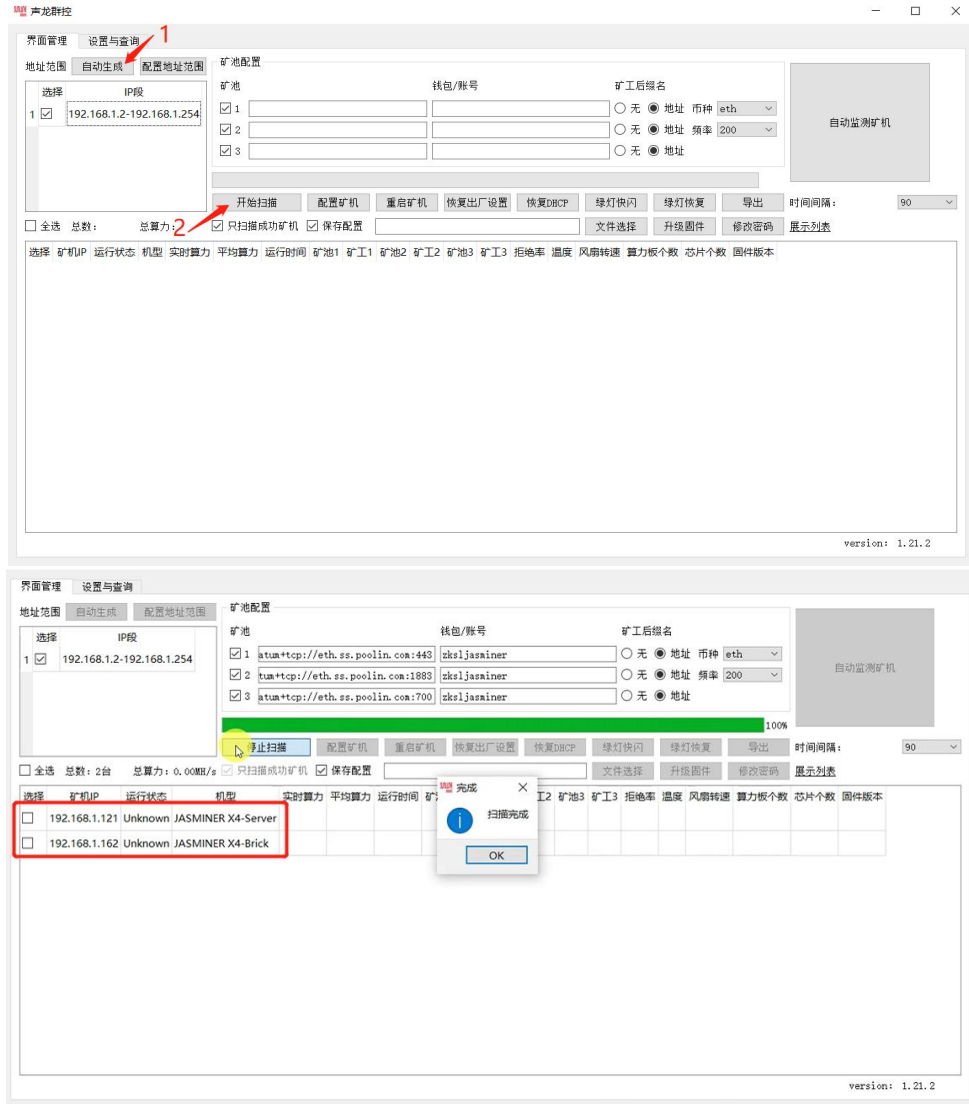
### 2. Configuring equipment

Configuring with JASMINER Group Control Software

- Download the "IP Group Control Management Software" from the JASMINER website → Service → Firmware and Software → Other;
- Install the sl\_miner.exe program (IP group control management software) on a Windows PC, double click on it and run it, note that the PC needs to be on the same



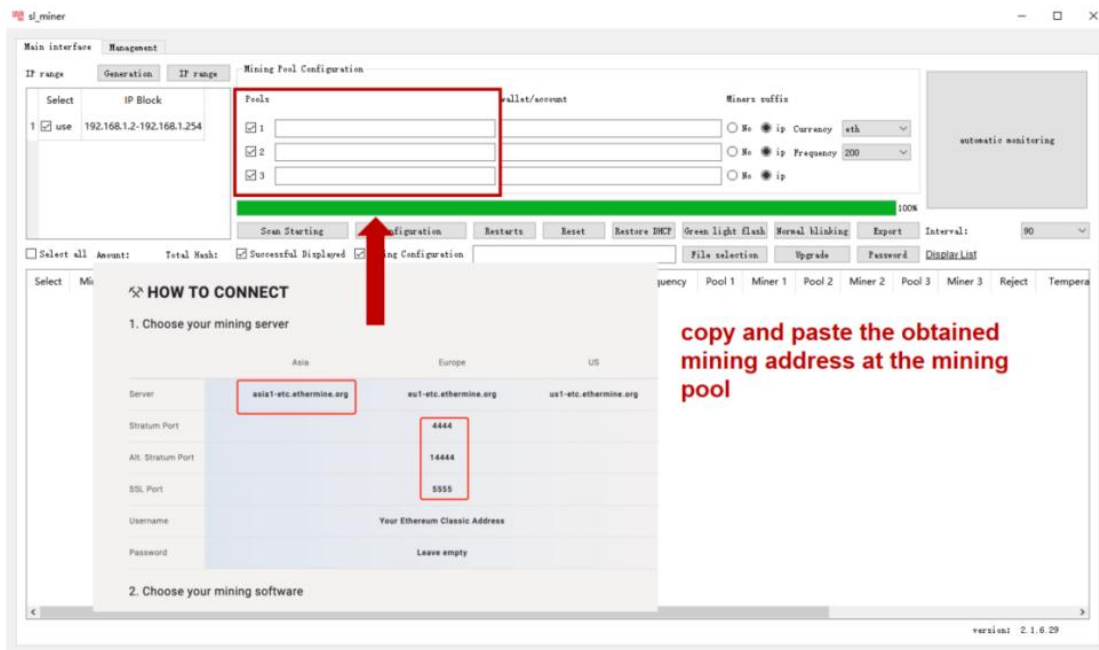
- network segment as the device;
- After successful installation as shown below, click on "Auto Generate" → "Start Scan" in the software interface, the software will automatically pop up information about the device after the scan is complete.

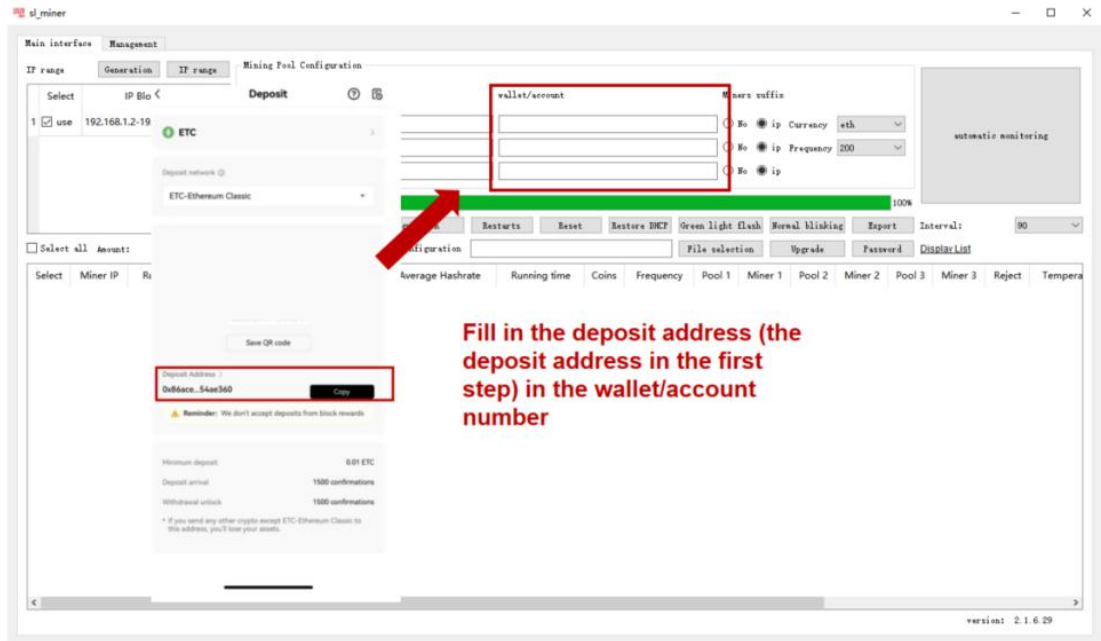


- Check the machines need to be configured

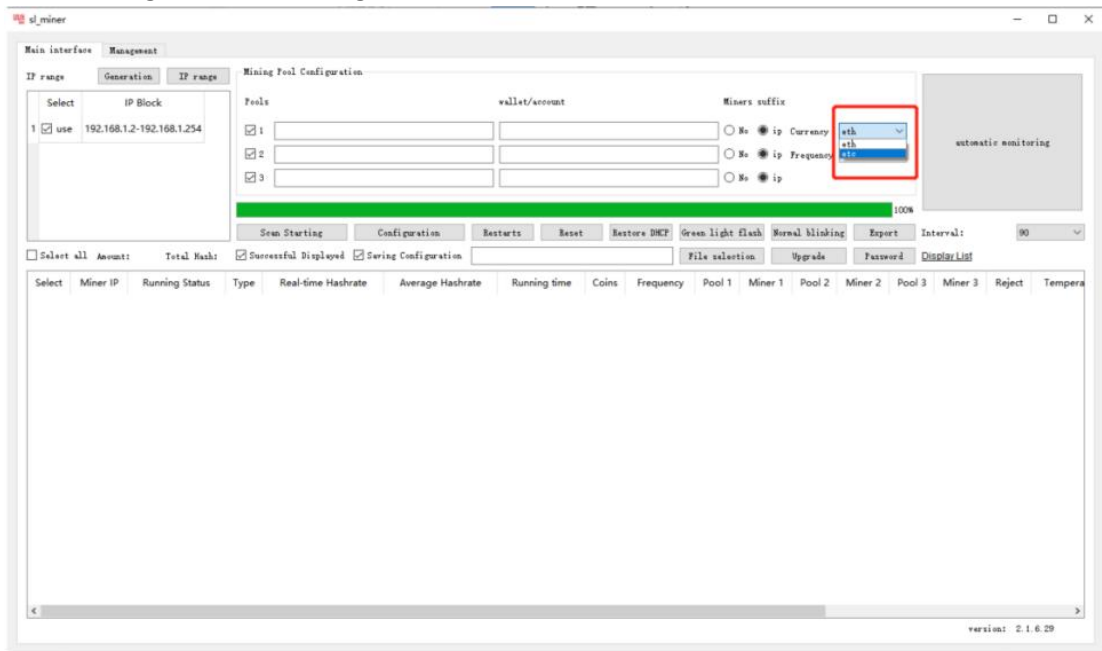


- Copy and paste the obtained pool address into the pool, then copy and paste the sub-account (worker) into the wallet/account number (if you do not have a registered pool, you need to register for the pool first, refer to the pool registration tutorial for details).

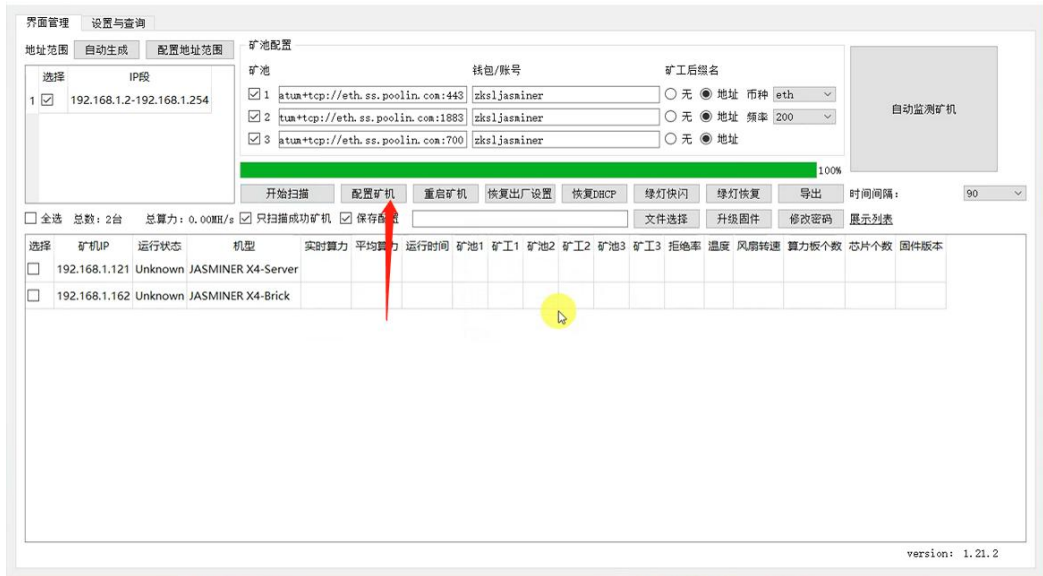




- Select the algorithm, ETC algorithms;

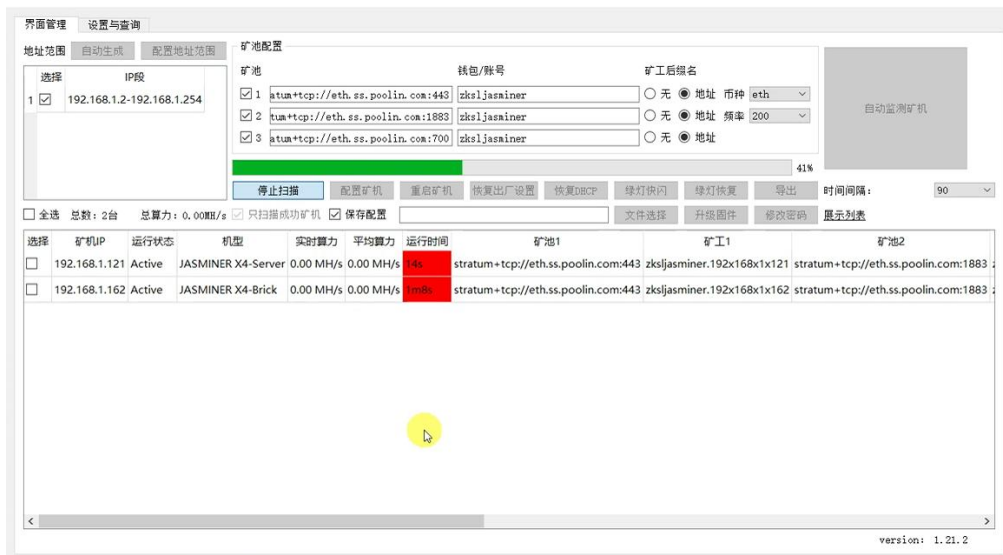


- select the operating frequency, the default is 200 MHz;
- clicking on Configure Miner to start the configuration;



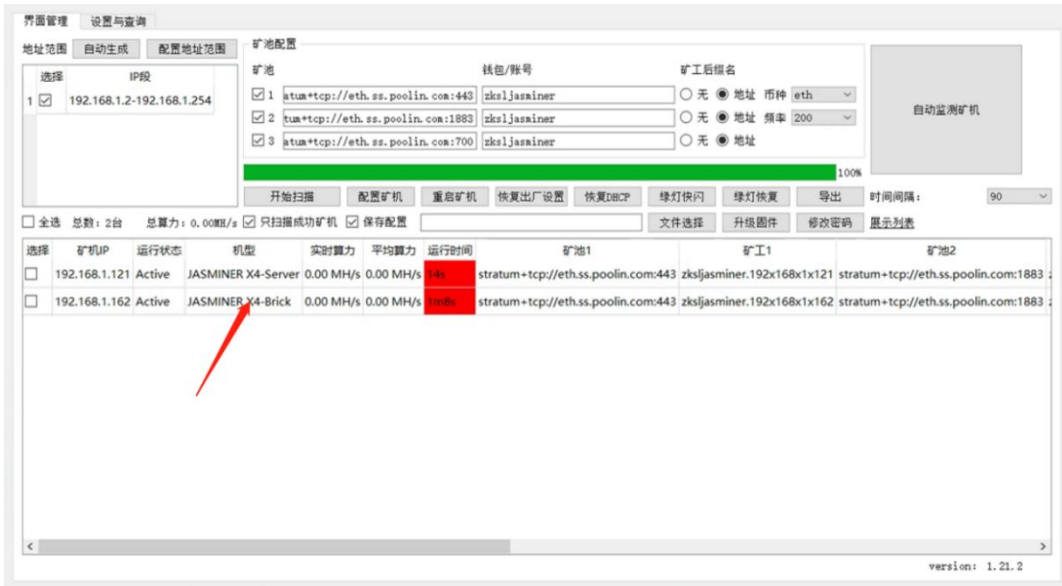
- Check the hash rate

After the device running for about 30 minutes, you will be able to view the corresponding hash rate information.



At this point the configuration of the high throughput server has been completed and the machine can work normally.

3. Other settings: double click on the device in the group control software to enter the web page for modification and setting.

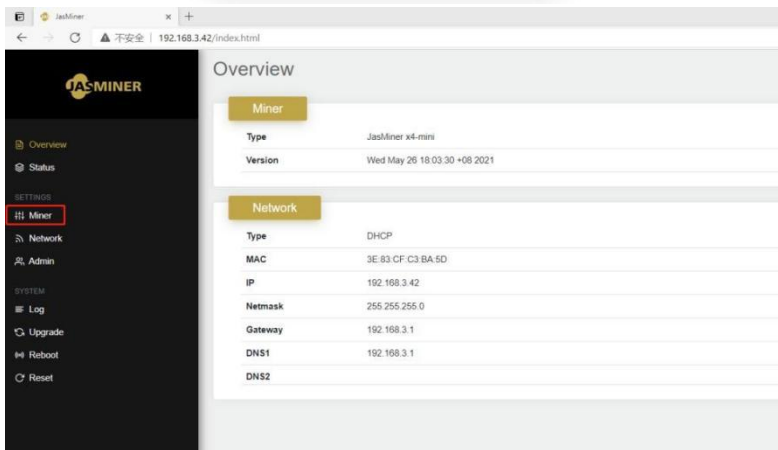


\*Up to now, all parameters have been set.

If you would like to know more about device setup you can read items 4 and 5.

#### 4. Setup without IP group control management software.

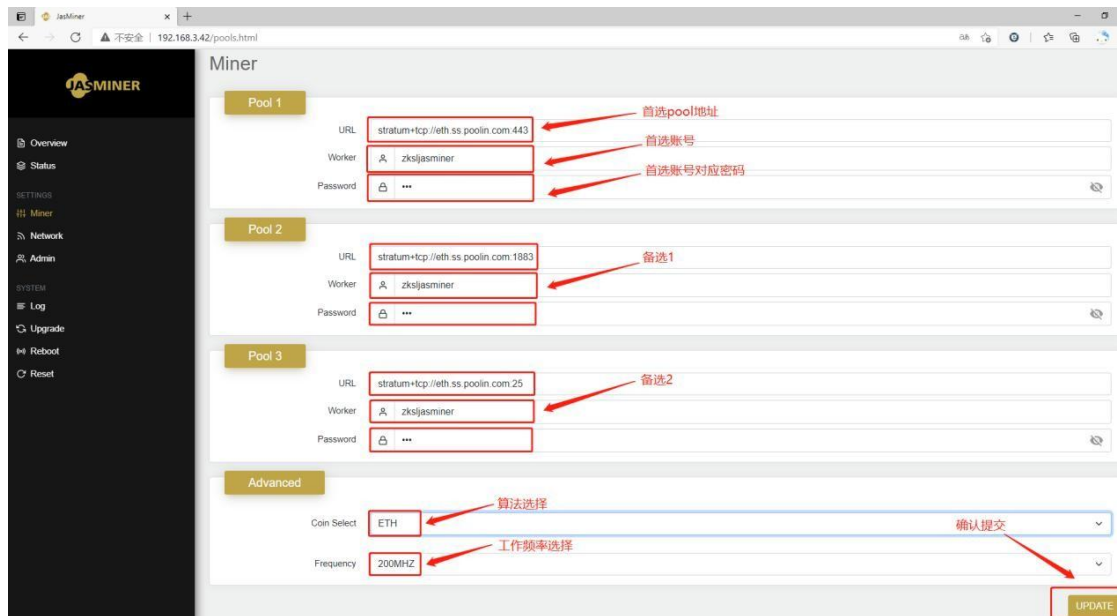
- Enter the shown status IP address into the browser and press enter to open the device web operation interface.
- Default user name: root Default password: root



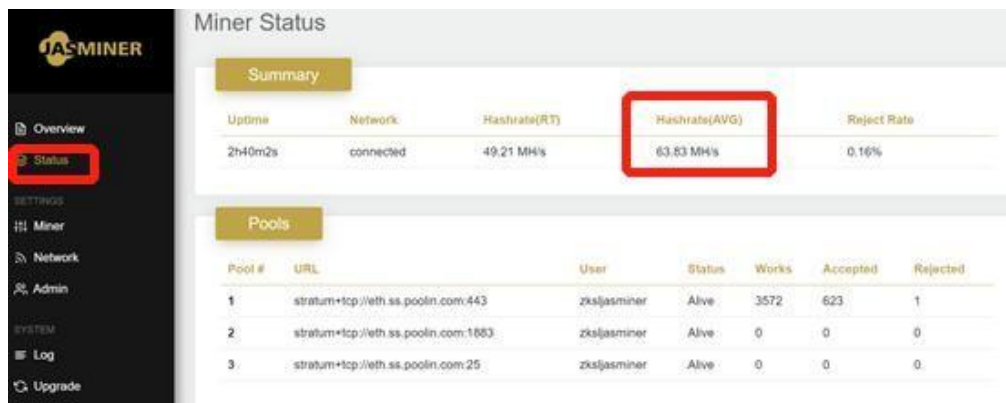
- Enter the "miner" configuration interface to modify the ore pool settings and let the device start to provide hashate for you.
- Enter the preferred and two alternative mining pool addresses, account

name and password.

- Select the algorithm. The device support both ETCHASH and ETHASH algorithm. Default algorithm is ETCHASH.
- Click "update" to submit the configuration.



- View hashrate  
After 30 minutes running, we can find device hashrate on Status page.

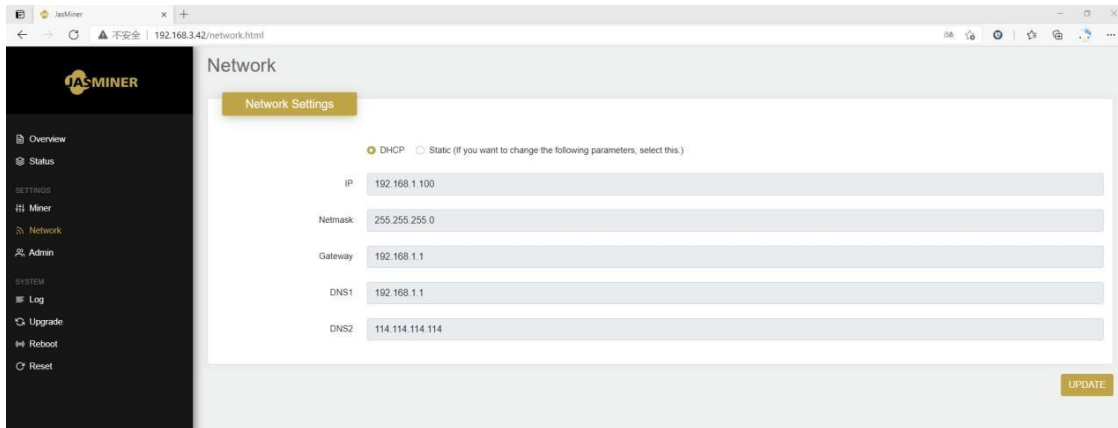


Configuration of this high-throughput server is complete.

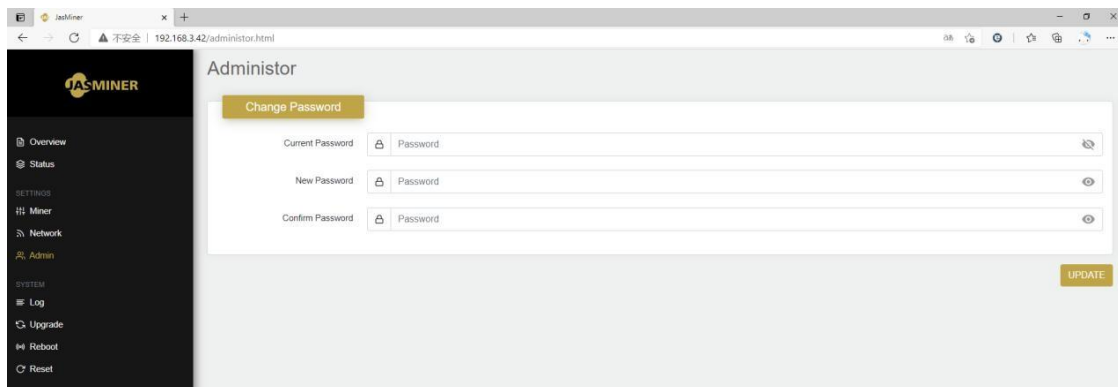
## 5.Other settings

- IP setting: If you need to change the network configuration such as IP address, select the "network" configuration item, and the device will dynamically

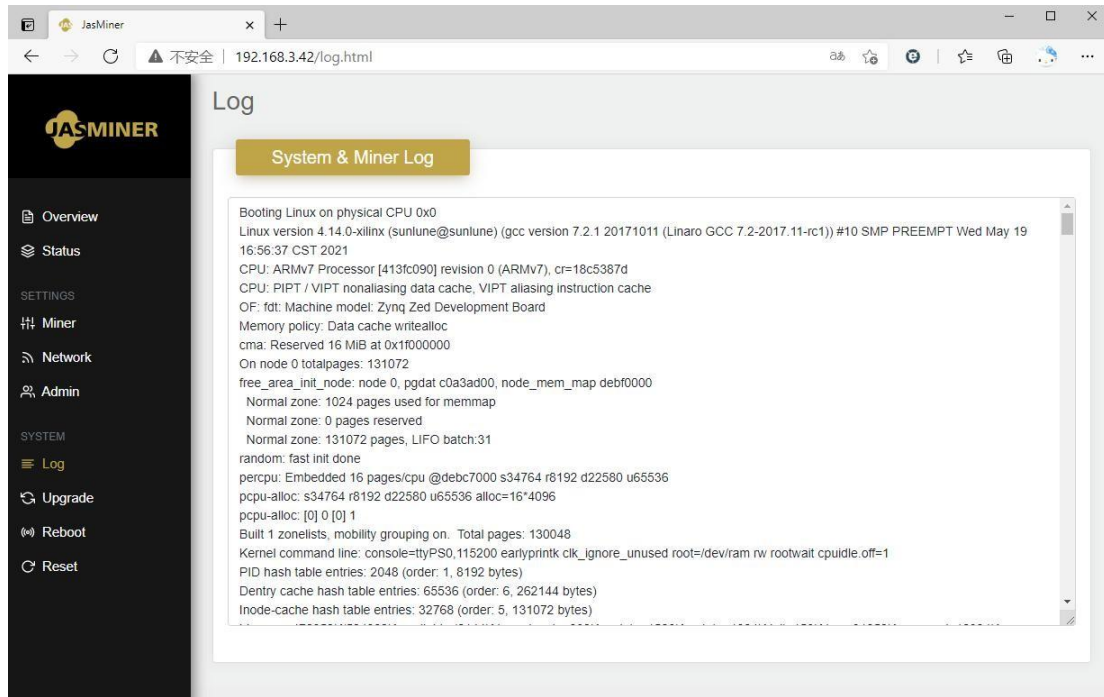
obtain the IP address by default. After the change, click "update" to take effect.



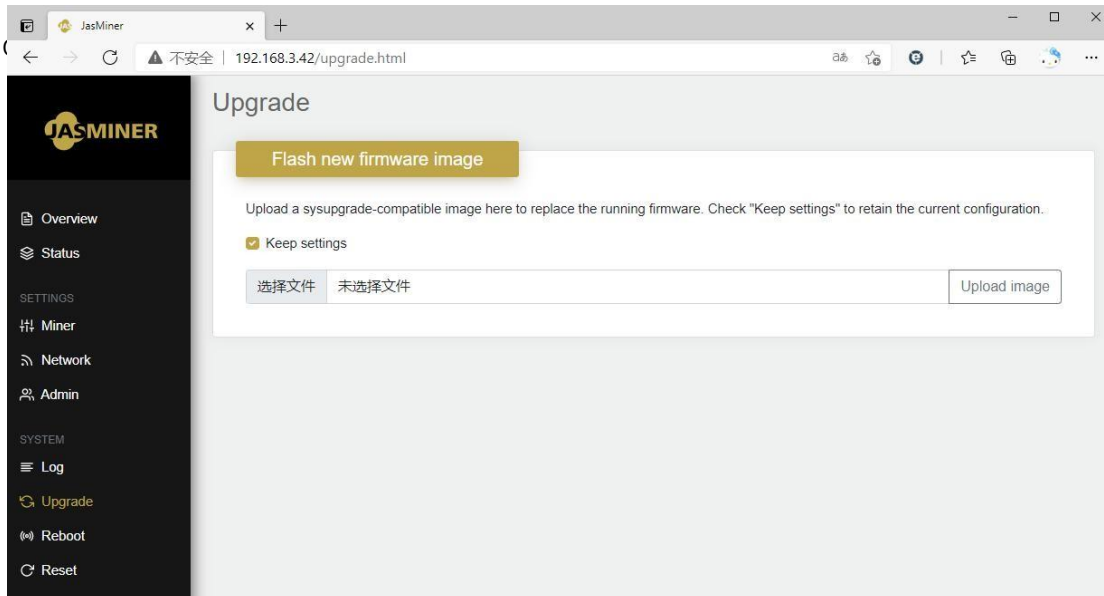
- Modify login password: If you need to change the login name and password. Select the "admin" configuration item. The default login name of the device is root and the default password is root. After the change, click "update" to take effect.



- View log: If you want to view the log information of the system operating. You can select the "log" option.

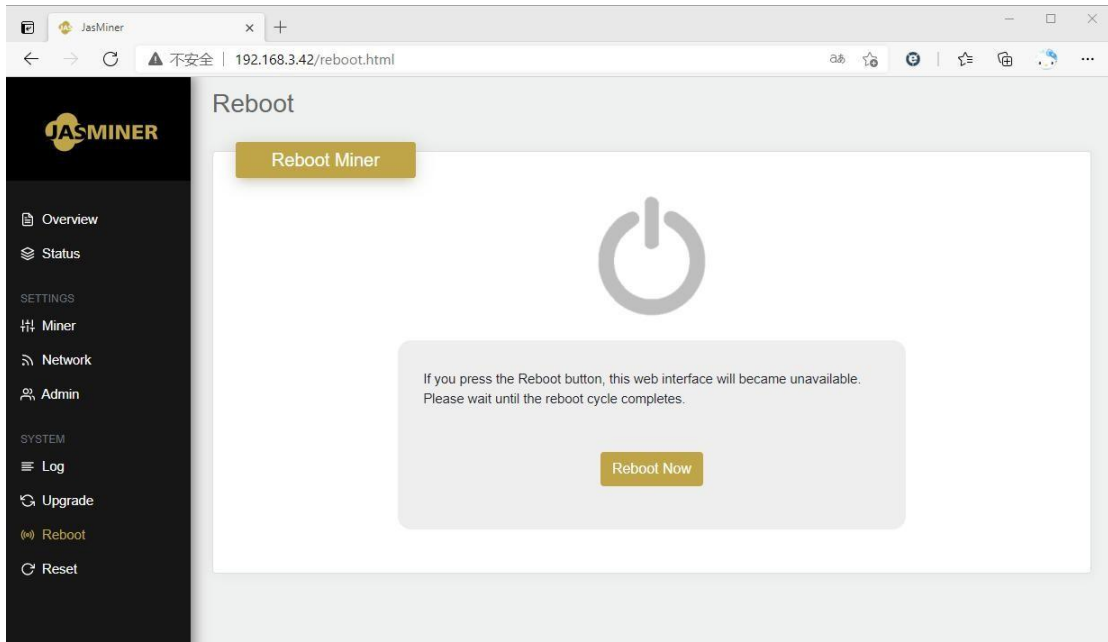


- Upgrade system firmware: Select the "upgrade" option, select the firmware to be upgraded, and click "upload image" to complete the upgrade



- Restart the device: Select "reboot" and click "reboot now".





Restore the device to the factory settings, select "reset", and click

