

JASMINER X16 High-Throughput Power Server User Manual

Total 15 pages

January 2024

Catalogue

High-Throughput Power Server User Manual	1
I. Product overview	3
II. Check before use	4
1. Check before use	4
2. Note on use	4
III. Basic instructions	5
1. Equipment	5
2. Specification of equipment	6
3. Interface and description	7
IV. Use and Setup	8
1. Wiring and inspection	8
2. Configure the machine	8
3. Configure without group control software	13

JASMINER X16-P High Throughput Power Server Instructions

I. Product overview

High-throughput server (model: JASMINER X 16-P) is coming from Sunlune Technology Development (Beijing) Co., Ltd. Which based on independent research and development of JASMINER X 16 memory and computing integrated high-throughput computing chip, and developed a high cost effective server, the integrated memory and computing structure chip realizes the combination of memory and computing in one chip, increased access bandwidth while meeting memory capacity requirements, breaking through the bottleneck of computing power in the traditional computer architecture, with the provision of sufficient computing power, enhanced computing power, reduced volume, designed with a powerful fan, With the help of an integrated architecture and ultra-high throughput, certificate of work widely applicable to blockchain networks POW algorithms such as ETCHASH and ETHASH, with a professional server shape, suitable for professional site, bring a good ROI to customers.

High-throughput server has excellent computing performance, lower power consumption, simple but efficient IO expansion and high operation stability, which can meet the needs of all kinds of customers.



JASMINER X16 High-Throughput Power Server

II. Check before use

1. Check before use

- After unpacking the new machine, please check whether the equipment shell is deformed or the interface is damaged. If there is any damage, please contact the after-sales service for treatment.
- Check the machine for any strange noise, please do not turn on the power and contact the after-sales service if there any metal-to-metal collision sound, screws off or loose.

2. Note on use

- This machine should not connect to any router or switch with POE function;
- Do not stack the machine or cover other objects to keep it cool;
- Please operate the machine in the recommended operating environment (operating temperature: 0-40°C, operating humidity: 5%RH~95%RH non-condensing), so as not to affect the normal operation or performance of the machine;
- Note that the dust and foreign objects, so as not to corrode the motherboard to cause the device can not work properly;
- Please do not modify the machine privately, the resulting damage to the machine is not covered by the warranty.

III. Basic instructions

1. Equipment



Caution:

Please place the machine according to the placement shown above, do not place the machine in a confined space for operation;

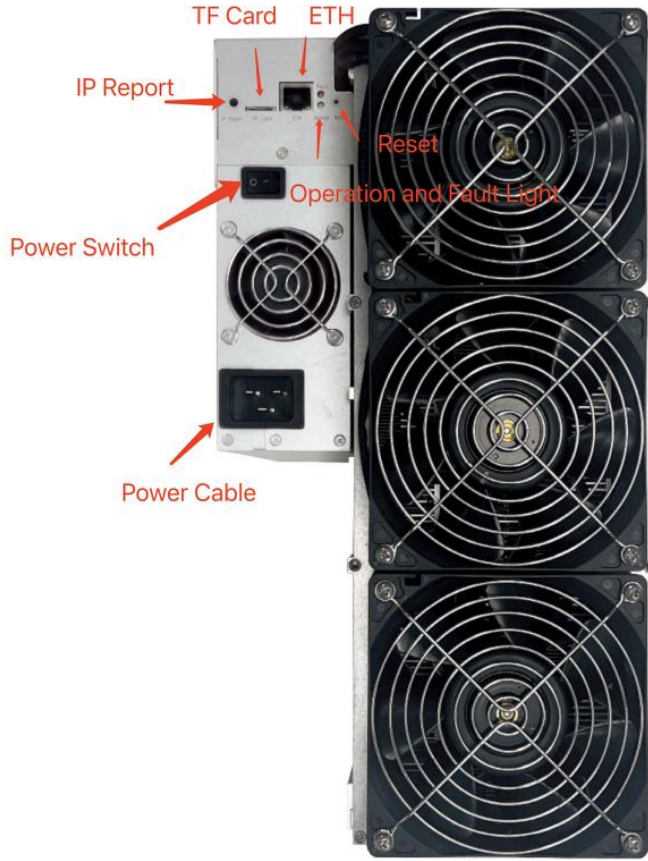
For your safety, it is forbidden to disassemble any screws or fasteners on the product;

This machine generates heat during operation, please avoid touching the case during operation.

2. Specification of equipment

Basic information	
Appearance	
Size	374mm(H)×143mm(W)×293mm(L)
Weight	14 kg
Specification	
Processor	JASMINER X 16
Memory	8GB
Bandwidth	1TB/s
Network	RJ 45 Ethernet at 10 / 100 / 1000M(Using shielded Ethernet cables)
Port	TF card port(Non professional users are prohibited from using), power port, RJ 45 network cable interface
Power	200-240V, 50 / 60Hz, 12.5 A, 1900 W±10%,built-in power supply
Cooling	Electric fan
OS	Linux
Function	With the characteristics of integrated memory and computing architecture and ultra-high throughput, it can be widely used for POW of blockchain network which using ETCHASH and ETHASH algorithms, remote control via network interface,and can provide users with high throughput computing services without access to traditional peripheral devices (such as mouse, keyboard, display, etc.).
Environmental Specification	
Ambient Temperature	0-40°C
Humidity	5% RH ~ 5% RH-95% RH
Altitude	2,000 m and below

3. Interface and description



TF card	The TF card slot
IP Report	Using IP Report software, the high-throughput server IP will be feedback to computer
ETH	Network cable interface
Reset	Restore the factory setting button
Fault Light(red)	The blinking indicates that a fault has occurred
Operation Light (green)	The flashing light indicates that the machine is working properly

IV. Use and Set up

1. Wiring and inspection

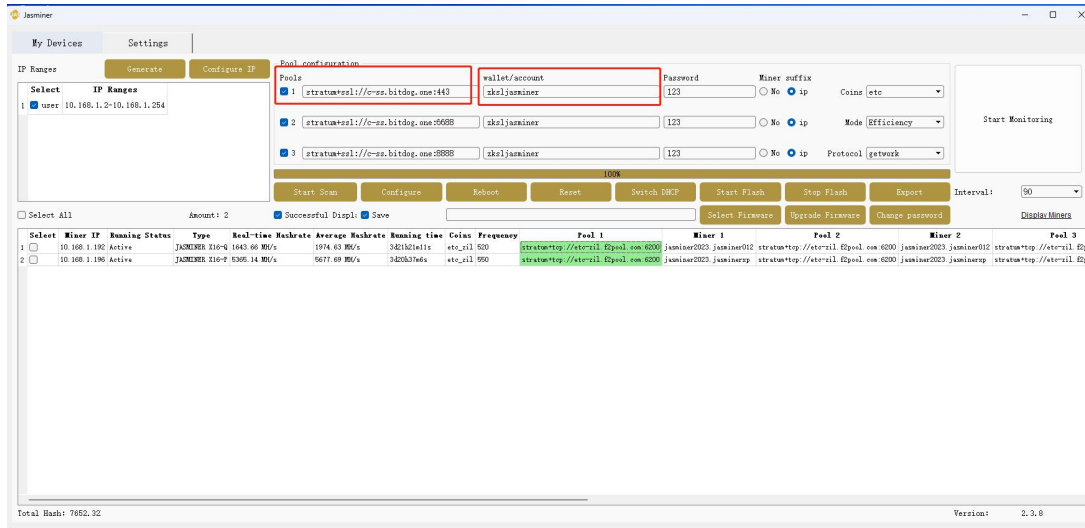
A) Network cable connection: insert the RJ 45 crystal head into the Ethernet port (shown as ETH on machine back), pay attention to the direction when plugging the cable, and please insert the crystal head in place;

B) Power cable connection: Please connect the 120V-240V AC power supply to operate correctly.

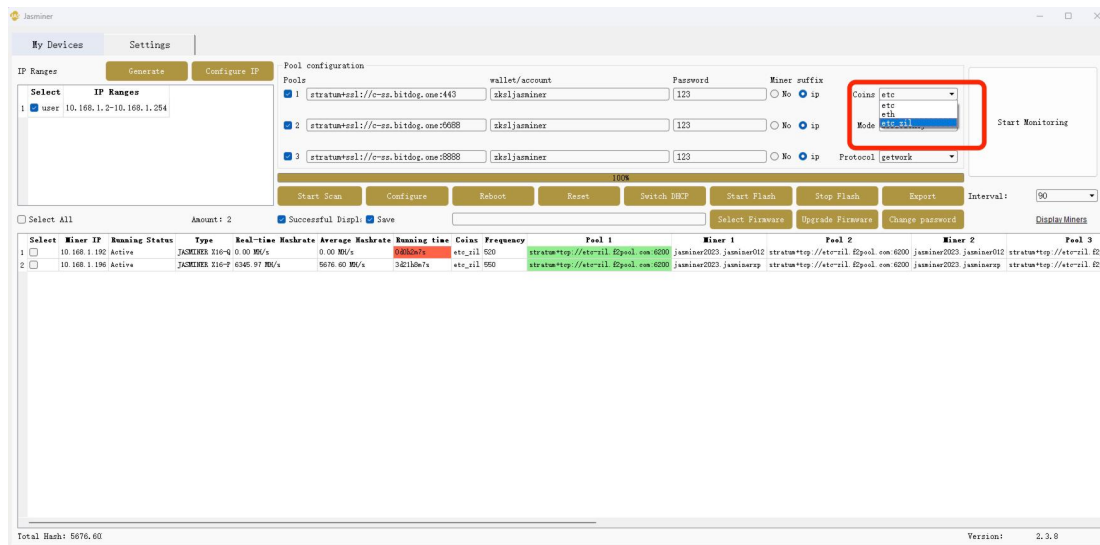
2. Configure the machine

Configure the machine by JASMINER IP group control software.

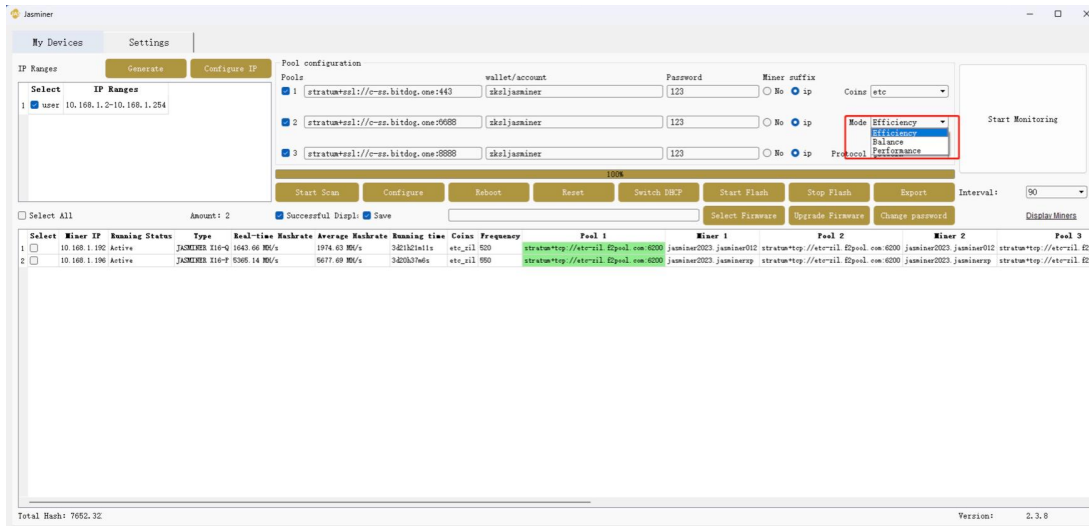
- Download the IP group control management software from following path: JASMINER website → support → Installation → guide & firmware → other → software & firmware;
- Install the JASMINER program (IP group control management software) on Windows OS, double-click to run, and note that the computer needs to be in the same network segment with the machine;
- After successful installation, see the figure below, click "generate" → "scan" in the software interface to scan machine's IP, the relevant information will automatically pop up after scanning is complete.



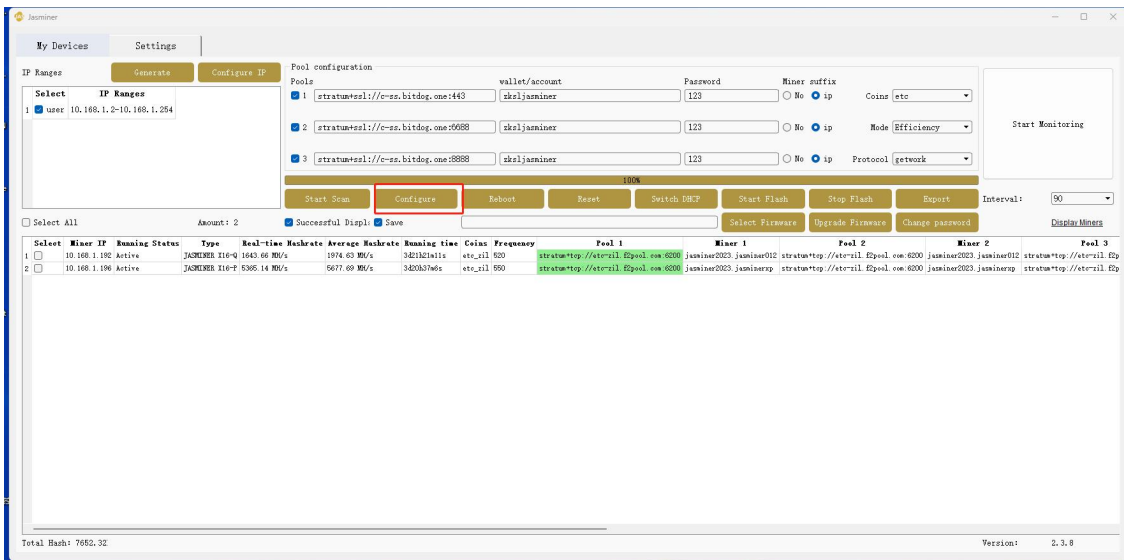
- Single mining ETC, select ETC algorithm, dual-mining select ETC + ZIL dual-mining (note that previous address and algorithm selection should be the same)



- Select the working frequency, the default is Efficiency, you can also select Balance, Performance.

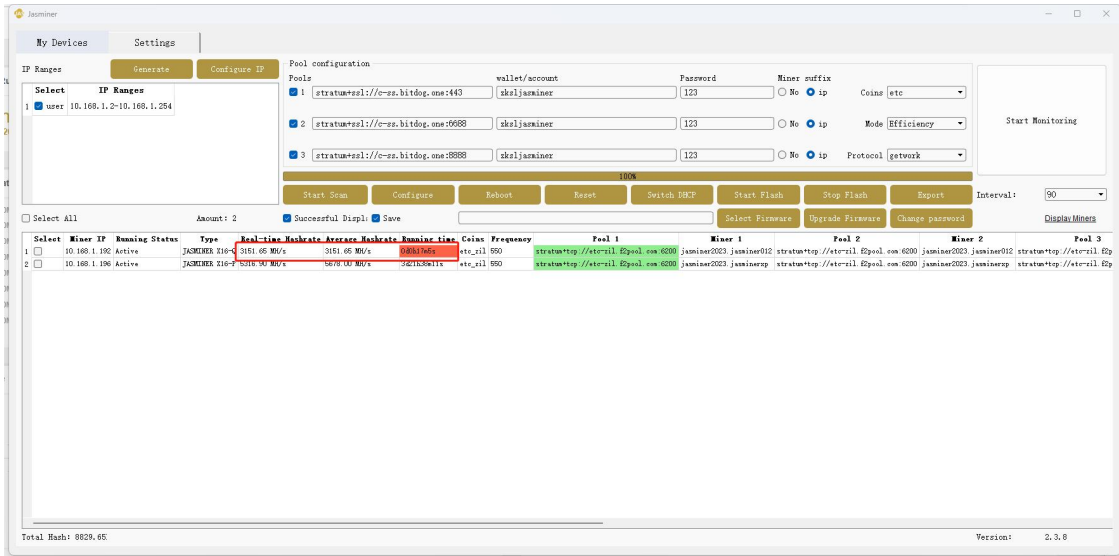


- Click the Configure to start the machine configuration



- View the hashrate

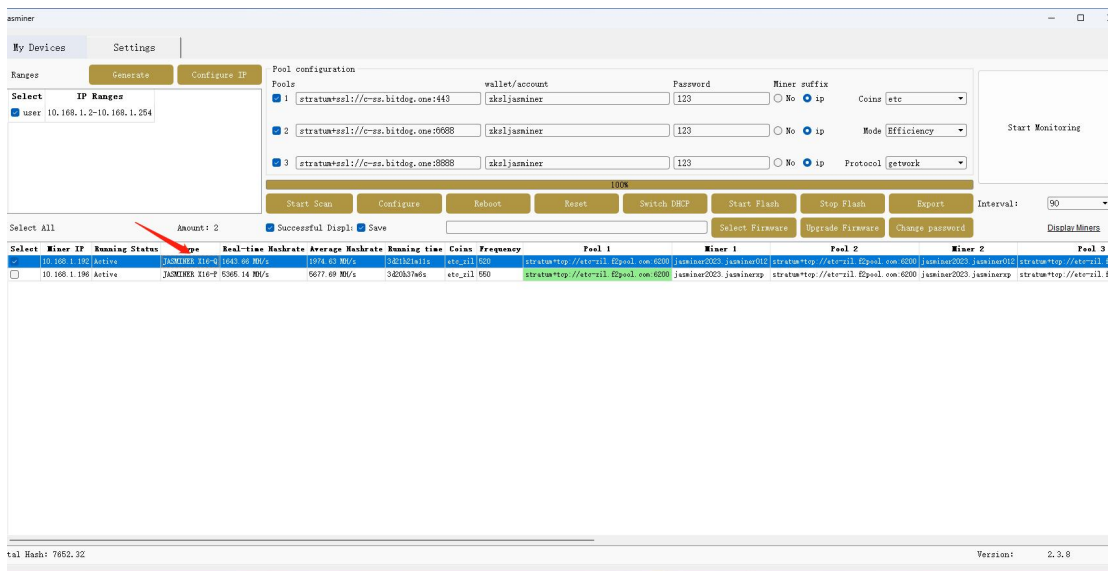
After the machine runs about 10 min, you can see the corresponding hashrate information.



By this point the configuration of the high throughput server is complete and the machine is ready to work.

[Other Settings]

Double-click the device in the group control software to enter the web page to modify and set up.



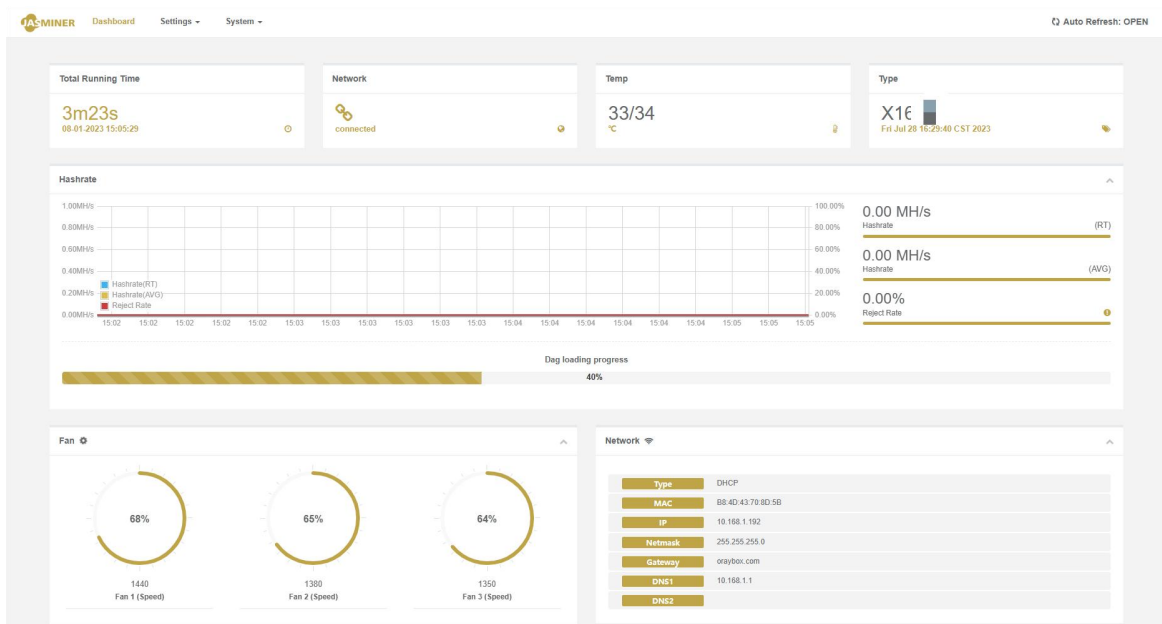
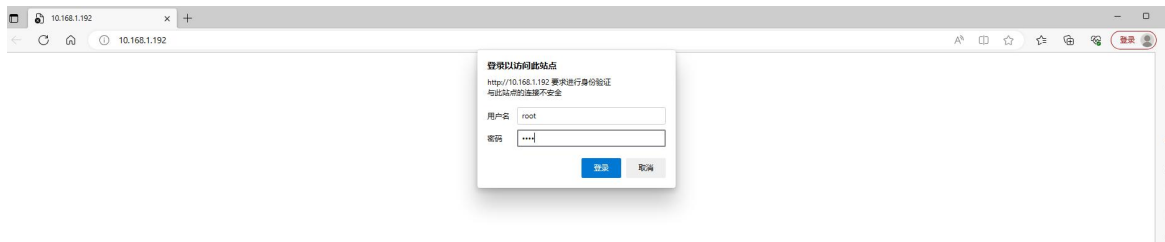
*You have set all the parameters by now, if you want to know more about setting, you can continue reading items 3.

3. Configure the high-throughput power server from the Backend Console without group control software

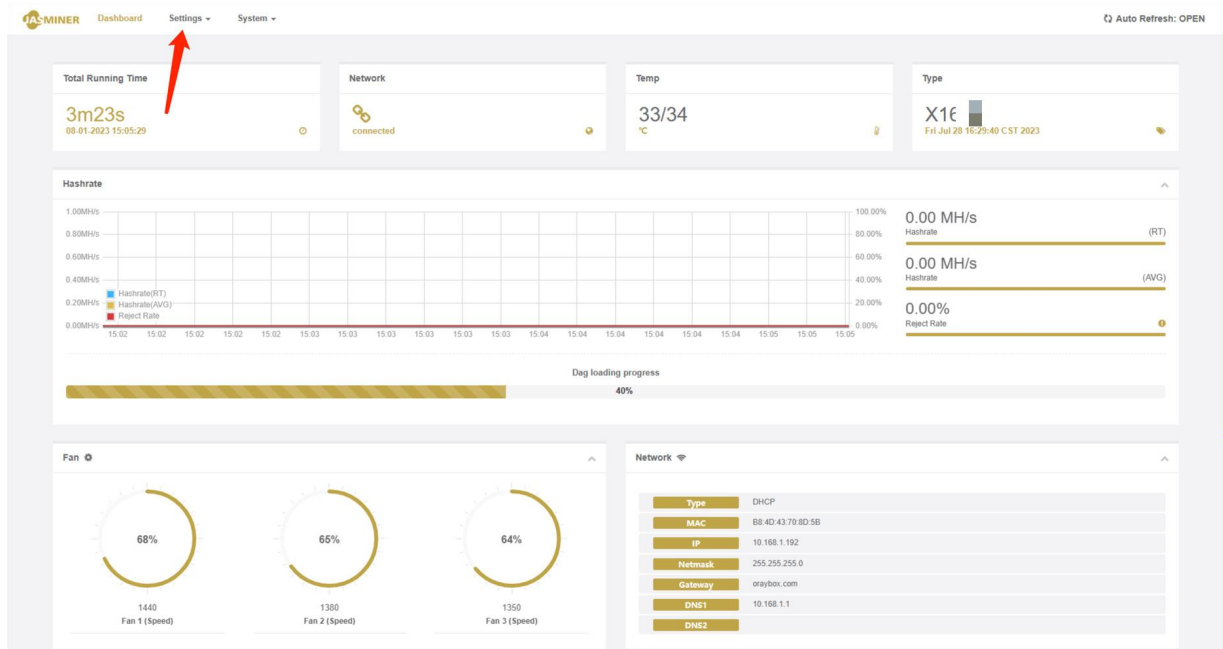
A) Enter the IP address of the machine in any web browser and press the Enter key to open the machine's Backend Console.

User name: root

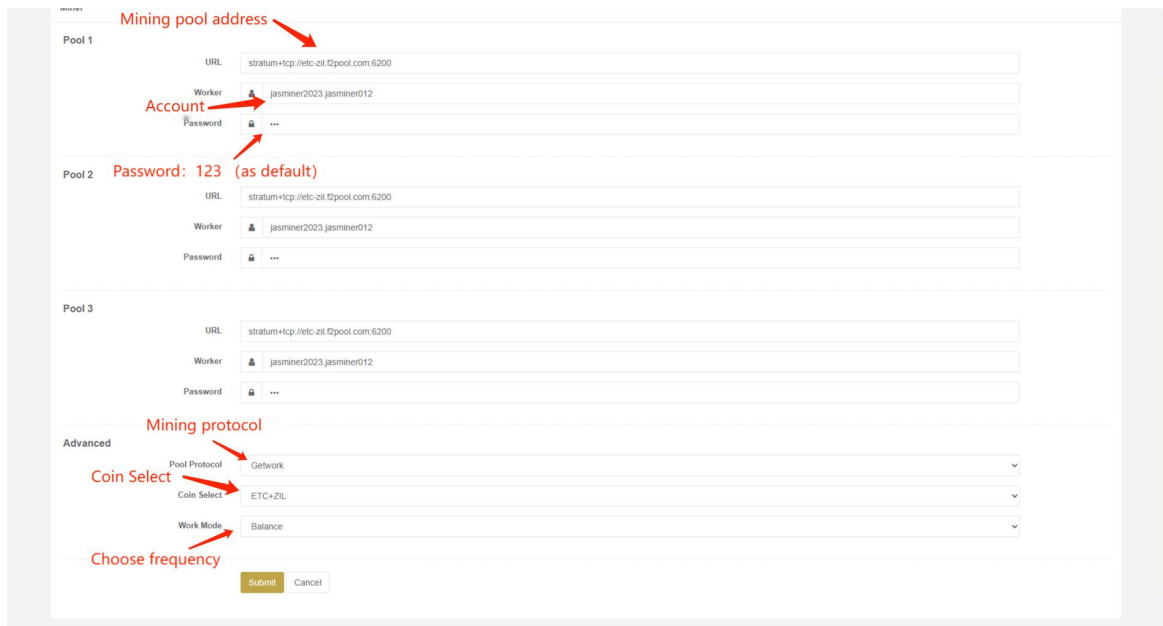
Password: root



B) Enter the "Settings → Miner" configuration interface to modify the mining pool settings, and let the machine starts to providing hashrate.



- Enter the preferred and two alternative mining pool address, account number and password, and refer to the mining pool tutorial;
- Select the algorithm, the device supports the two algorithms ETHASH, ETCHASH and three mining modes ETH, ETC, ETC + ZIL, if you need to double mining ZIL, please choose ETC + ZIL or ETH according to the main coin algorithm;
- After the selection is complete, click "UPDATE" to submit, and the configuration is complete.



C) After runs about 20 minutes, you can view the corresponding hashrate information on the Status page.

